



FOR LEASE

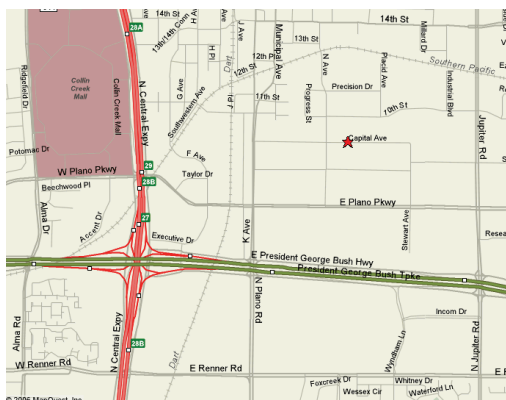
1507 Capital Ave., Sts 102 & 103 Plano, Texas

5,100 - 10,200 Sq Ft



COSTAR

- 2 Spaces Available
- ±16' Clear Height
- 1 Grade Level Door
- Newly Refinished & Move-In Ready
- 25% - 50% Office Area
- Close Proximity to US Hwy 75 & I-635



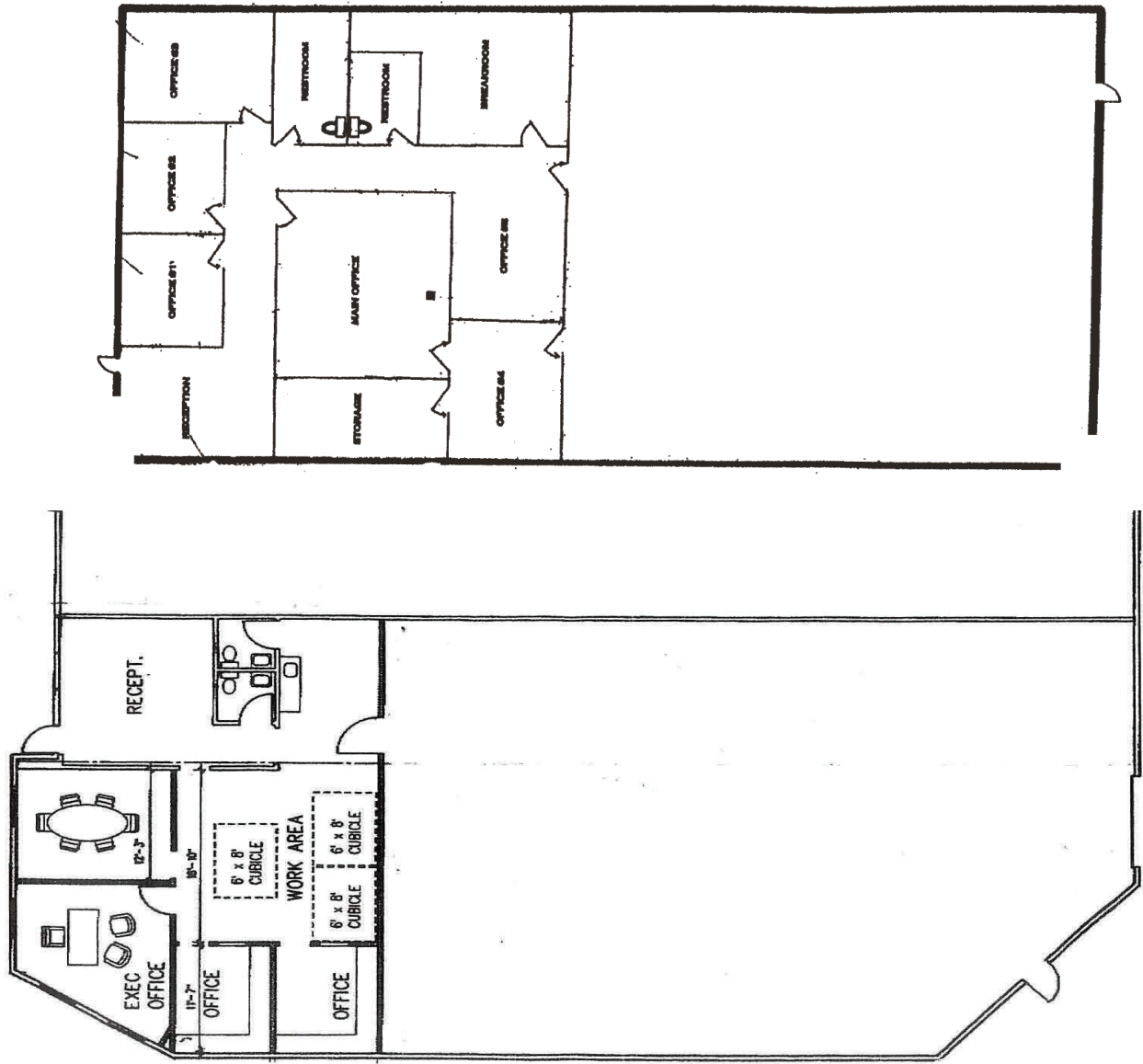
Scott Asbury

SAsbury@3LRealtyGroup.com

214.922.9797



13155 Noel Road, Suite 900 Dallas, Texas 75240 Phone 214.922.9797



1507 CAPITOL

The First Rule of Real Estate.
 Location. Location. Location.

The First Rule of Real Estate Services.

